

Brockham BRX4Z Well Test Update Onshore UK

Doriemus Plc (ASX: DOR) (“Doriemus” or the “Company”), announces that Angus Energy Plc, the operator of the Brockham Oil Field in the UK under Production Licence (“PL”) 235 (the “Operator”), has provided the following update regarding well testing of the Brockham X4Z well:

- The BRX4Z well has been perforated from 960 metres to 1155 metres (an interval of 195 metres) measured depth.
- All of the estimated stimulation and kill fluids that has been placed in the wellbore have now been recovered with the assistance Nitrogen. The well started flowing naturally to surface once all of the stimulation, completion and kill fluids were recovered with flow rates still steadily rising as the tests continued.
- It now appears that a part of the perforated interval is producing water, which may be inhibiting significant oil flow and therefore has not allowed sustainable flow rates of oil to be reported at this time.
- Oil of 40+ API has been recovered at surface and the analysis of samples confirmed the oil to be Kimmeridge origin.
- The Operator is now preparing an engineering programme to isolate this water zone which will, subject to agreement from all regulators and partners, include the return of a workover rig.
- Extensive geochemical analysis and modelling of the Weald Basin conducted by and on behalf of the Operator, including innovative work on the effects of organic content on measurements of historical temperatures, indicates that the Kimmeridge is mature enough to produce oil over an area which includes Brockham.

Brockham Production License:

The Brockham Licence is 8.9km² in size and located in the northern portion of the onshore UK Weald Basin in Surrey south of London and 10km north-west of London’s Gatwick International Airport (Figure 3). Doriemus owns a 10% direct interest in the Brockham Oil Field which is held under UK Production Licence PL235. The Field is operated by Angus Energy Plc (the “Operator”).

David Lenigas, Doriemus Plc’s Executive Chairman; commented; “Confirmation from Angus Energy that the well has flowed naturally and that oil has been produced to surface are clear positives arising out of the update on the testing programme at Brockham. It is a big positive that this recent work at Brockham has now identified the presence of moveable oil at Brockham which adjoins our Horse Hill oil discovery in the Kimmeridge formation. There is obviously more work that needs to be undertaken with this well testing programme to isolate the water zones and we look forward to further proposals from Angus in respect of tackling the water influx, which they report as having inhibited oil flow.”

Brockham Production License:

The Brockham Licence is 8.9km² in size and located in the northern portion of the onshore UK Weald Basin in Surrey south of London and 10km north-west of London’s Gatwick International Airport (Figure 1). Doriemus owns a 10% direct interest in the Brockham Oil Field which is held under UK Production Licence PL235. The Field is operated by Angus Energy Plc (the “Operator”).

Doriemus Plc
ARBN: 619 213 437

Head Office:
Suite 3b, 38 Jermyn Street
Princes House
London, UK
Sw1Y 6DN

Phone: +44 2074400642
Fax: +44 2074400641
Email: info@doriemus.co.uk
Website: www.doriemus.co.uk

Australian Contact Information:
Julia Beckett
Joint Company Secretary

Address:
Suite 12, Level 1
11 Ventnor Avenue
West Perth WA 6005
Australia

Postal Address:
PO Box 1240
West Perth WA 6872

Tel: 08 6245 2050

Email: julia@everestcorp.com.au

Directors:

Executive Chairman
David Lenigas

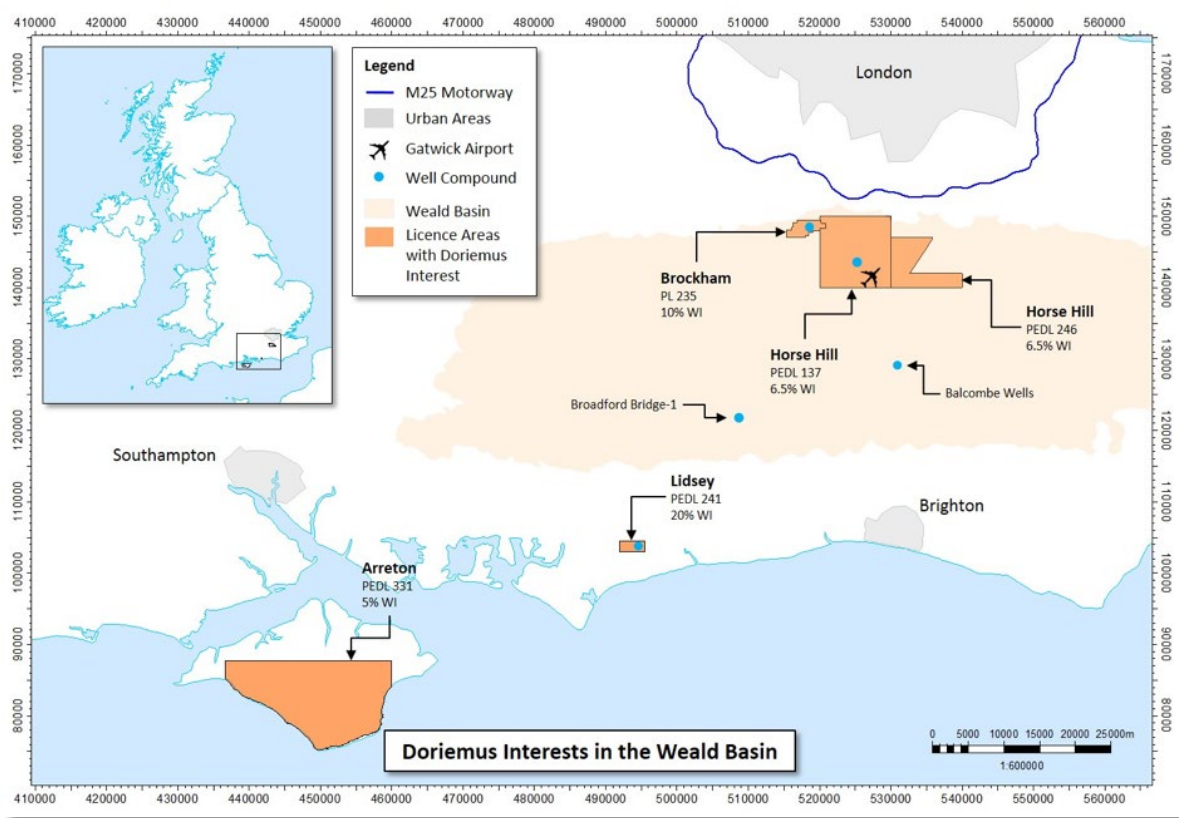
Executive Directors
Greg Lee
Donald Strang

Non-Exec Director
Hamish Harris

ASX Code: DOR



Figure 1: Doriemus Plc's UK based Oil and Gas Assets:



CONTACTS:

For further information on this update or the Company generally, please visit our website at www.doriemus.co.uk or contact:

Doriemus Plc

UK Contacts:

David Lenigas (Executive Chairman)

+44 (0) 20 7440 0640

Greg Lee (Technical Director)

Australia Contacts:

Julia Beckett (Joint Company Secretary)

+61 (0) 8 6245 2057

Email: julia@everestcorp.com.au

FORWARD LOOKING STATEMENTS AND IMPORTANT NOTICE:

This announcement may contain forecasts, projections and forward-looking information. Although the Company believes that its expectations, estimates and forecast outcomes are based on reasonable assumptions it can give no assurance that these will be achieved. Expectations, estimates and projections and information provided by the Company are not a guarantee of future performance and involve unknown risks and uncertainties, many of which are out of the Company's control. In respect to its UK operations, Doriemus is generally reliant on the information provided to it by the operators of those assets and does not control the day to day operations of these projects and is not always able to independently verify the information provided by such operators. Actual results and developments may differ materially from those expressed or implied. It is believed that the expectations reflected in these statements are reasonable, but they may be affected by many variables which could cause actual results or trends to differ materially. To the maximum extent permitted by applicable laws, the Company makes no representation and can give no assurance, guarantee or warranty, express or implied, as to, and takes no responsibility and assumes no liability for (1) the authenticity, validity, accuracy, suitability or completeness of, or any errors in or omission from, any information, statement or opinion contained in this announcement and (2) without prejudice to the generality of the foregoing, the achievement or accuracy of any forecasts, projections or other forward looking information contained or referred to in this announcement.

Investors should make and rely upon their own enquiries before deciding to acquire or deal in the Company's securities.

QUALIFIED PETROLEUM RESERVES AND RESOURCES ESTIMATOR STATEMENT:

Unless otherwise specified or referenced, the technical information and resource reporting contained in this announcement was prepared by, or under the supervision of, Mr Gregory Lee, who is the Technical Director of the Company. Mr Lee has more than 30 years' diversified experience in the petroleum industry. Mr Lee is a chartered professional Engineer (CPEng) and a member of the society of petroleum engineers (MSPE) and has been an independent consultant Petroleum Engineer since 1992 and has sufficient experience in exploration for, appraisal and development, operations of oil and gas resources.

Glossary

°API	a measure of the density of crude oil, as defined by the American Petroleum Institute
oil field	an accumulation, pool or group of pools of oil in the subsurface that produces oil to surface.
flow test or well test	a flow test or well test involves testing a well by flowing hydrocarbons to surface, typically through a test separator. Key measured parameters are oil and gas flow rates, downhole pressure and surface pressure. The overall objective is to identify the well's capacity to produce hydrocarbons at a commercial flow rate.